

# SPRING 2023 NEWSLETTER



## **Elouera Ski Club Ltd**

**Pygmy Possum Lodge, Charlotte  
Pass  
Kosciuszko National Park  
and  
Castaways Unit, Shoal Bay  
ACN 002 703 988**

**Elouera Ski Club Ltd.  
PO Box 135  
Darlinghurst NSW 1300**

**[information@eloueraskiclub.asn.au](mailto:information@eloueraskiclub.asn.au)**

## President's Message

Many thanks to the members who stayed at the lodge this winter. The snow wasn't great, but we had solid bookings and very few issues. To review the season, we ran a survey of all member and non-member lodge users. The survey results are discussed in a separate article. We will run a similar summer guest survey in 2024.

Finally, after almost two years of work, we have submitted the DA to refurbish the lodge. I've covered the topic previously: exterior cladding, interior fire sprinklers, new balustrades and fire-secure internal doors are some of the major items. CPSR as head lessee signed off on the DA last week, and the DA is now posted on the planning website.

Our submission timing isn't ideal with the coming holiday season. We expect questions arising to be handled in January and February 2024 and hope for approval in March 2024. If this timetable is achieved, then April to May 2024 needs to be available for work to get started. This two-month period is currently blocked from bookings to allow for that should it prove feasible. However, there are delay risks in the approval process and it is likely we will need to defer the first work to spring 2024.

While the DA covers the major lodge works, many smaller jobs within the lodge are continuing. The feedback over winter has confirmed the successful 8-room trial of new panel heaters and new shower heads. Consequently, all rooms will be upgraded with new heaters and shower heads over the coming months.

Lodge heating in the lounge dining areas was temperamental this winter. Both wings and particularly the east wing, suffered outages. These issues are also under review and repair.

The Castaways work mentioned in our last newsletter is now complete, and I want to thank Malcolm Mathie for his management of this project. Castaways is the club's only tangible asset and demands our attention.

Thanks for your support and encouragement.

Regards, Jon Barber



*View from Waterfall looking towards Club Lake, Caruthers and the edge of Blue Lake Cliffs.  
Photo credit: S Springett*

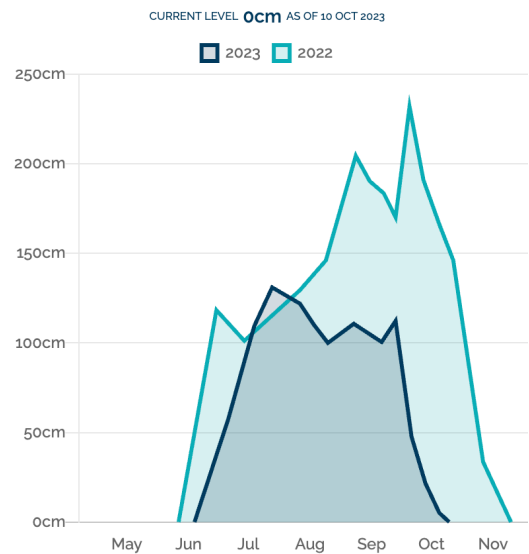
## Weather

2023 was a much leaner snow season than 2022 although we all made the most of it. The snowfall began in June as we have become accustomed to, which gave a decent coverage for July.

As the graph shows there was little follow up snow in August. If you'd like to see how this compares to other years check out the Snowy Hydro live data generator.

You will all note the juxtaposition of this data and the following article.

### Spencers Creek



<https://www.snowyhydro.com.au/generation/live-data/snow-depths/>

## Member News

Exciting news in the global energy transition! Andrew Blakers (one of our club members) has received recognition with his colleagues for research in solar cells. The PERC solar cell is more

efficient than a traditional silicon cell in converting light to electricity. Andrew is Professor of Engineering at ANU where he works on solar, wind, pumped hydro and sustainable transport. I encourage you all to read Andrew's May 2023 Conversation article provided in the link. Andrew has kindly provided the following text.

*The [fastest energy change in history](#) is underway, with annual new global solar panel capacity comfortably exceeding everything else combined. Solar is growing fast enough to produce a fully decarbonized global energy system sufficient to meet the needs of ten billion affluent people in 2050.*

*About half of all solar panels made to date are based on the PERC design, and cumulative sales of PERC solar panels have passed A\$200 billion. These panels are mitigating about 2% of global greenhouse emissions, a figure that is growing rapidly.*

*It was an honour to be presented with the [Queen Elizabeth Prize for Engineering](#) by King Charles at Buckingham Palace alongside academic colleagues and friends. This prize recognises not only our research group, but also the thousands of solar cell researchers and commercialisation specialists who contributed to PERC cell technology, which in turn supports solar power being the cheapest source of energy in history.*



## Winter Survey

Over the winter season, we had 250 over 18 year olds stay in the lodge. An anonymous survey invite went to all 250 of these members and guests. Members who didn't stay this winter didn't get surveyed. There were 71 responses (28%) which is an excellent participation, thank you.

1. 97% of members and guests were very satisfied with the Lodge.

92% were satisfied with lodge WIFI, 90% with the kitchen, 85% with the food store and 74% with the games room.

Areas which respondents said would improve their experience included general lodge renovations (28%), behaviour in the lodge (18%) and affordability (8%).

2. There was mixed satisfaction with resort services. 56% were satisfied with lift tickets/ski school, 48% with Oversnow and 47% with resort catering.

Areas respondents said would improve their experience included the Oversnow (30%) and improved general resort services (23%).

3. For mobile/data coverage, 95% of Telstra users were satisfied. This was two-thirds of members and guests. Only 48% of users with other mobile services were satisfied.

Thank you for the input on the lodge. It is important that we get this input from a broader group. A number of actions are underway to address the issues raised. We will add some games and books for the younger guests, and we have communicated with Optus on their local service and with CPSR on oversnow bookings. We will keep you posted on progress.

## Pygmy Possum Lodge Bookings Winter 2023

After the mammoth demand for places in the 2022 winter season, the demand for places in the 2023 winter season eased back a little but was still stronger than pre COVID "normal" levels. The task of allocating the bookings was relatively easy when compared with last year!

## Major Working Bee Sunday 7 April to Sunday 14 April, 2024

More information will be forthcoming in January. If you would like to know more or can assist, call John Rodger at 0419 211 071 or [john.rodger@eloueraskiclub.asn.au](mailto:john.rodger@eloueraskiclub.asn.au)

## Booking Rates 2024

The board makes annual accommodation and subscription rate decisions at the October board meeting. Like all businesses and members, Elouera Ski Club is impacted by inflation. The CPI is currently running at 5-6%. Many of the club's costs such as annual rent and CPSR fees for water, garbage and sewage are CPI linked. Electricity and insurance are not contractually tied to CPI but they are impacted by inflation. Current higher interest rates offer the club some benefit. In November 2022 our term deposits were paying below 2% interest. As of September 2023 our average rate is now 4.2%.

Given the DA timing pushes our major construction work to spring 2024 and beyond, the board has decided to limit the increase in 2024 accommodation rates to 2% on the 2023 rates. While

this increase falls below the 5-6% needed to keep up with inflation, the board recognises that the golden goose in this analysis is high occupancy and our ability to spread our fixed costs over more bed-nights. Hopefully members appreciate this delicate balance and accept the logic of a 2% rise. In a similar vein, the annual membership subscription of \$121 (inclusive of GST) is unchanged and the per annum building levy of \$55 is increased to \$66 (inclusive of GST).

## Priority Bookings

The members' Priority Booking round for Winter 2024 will open for applications on 1st December 2023. The 2024 winter season booking period starts on Sunday 23<sup>rd</sup> June, and finishes on Sunday 22<sup>nd</sup> September. The full schedule of booking rates will be available on the website. It is also possible to take a booking to the "Preview" stage to get a quote of the booking fees. The club only sees the Submitted bookings, not the Previewed.

The priority booking round will close on Tuesday 13th February. This date is important: only the applications which are **submitted and fully paid for** by this date qualify for consideration in the priority booking round. The order of receipt of the applications prior to this date has no bearing on the outcomes of the priority booking decisions.

## What can you do to help?

The club is run on an entirely volunteer basis, which is how we keep the accommodation rates as low as possible. If you have any time to help with administration on a regular basis (at least 2 hours per week) please contact [membership@eloueraskiclub.asn.au](mailto:membership@eloueraskiclub.asn.au) with your offer of help.

For all members, please pay your dues by 31st March every year. To check what you owe and how to pay, use the [Membership --> Resources for Existing Members](#) page of the club website to have an up to date email sent to the address on record for your membership.

## Membership Invoices

The invoices for the membership annual subscriptions and the capital works contribution levy will be emailed in February 2024, and are due to be paid by 31 March 2024. The invoices will also be available prior to February 2024 via the Membership portal on the club web site.

Invoices for 2023 fees were sent in mid March, and again 1 week prior to the due date for payment. It appears that for many members these emails ended up in their SPAM folders and subsequently remained unpaid. You can prevent club emails from going to SPAM by creating filters on your incoming email to never send to SPAM any emails from the [membership@eloueraskiclub.asn.au](mailto:membership@eloueraskiclub.asn.au) or the [booking.officer@eloueraskiclub.asn.au](mailto:booking.officer@eloueraskiclub.asn.au) addresses.

## Cyber Security Reminder

From time to time the Club may send web links in our emails. Beware of phishing attacks where scammers impersonate senders to trick you into clicking harmful links. Be cautious with unexpected messages and links. Always check the web address before clicking. If an email seems off or is from an unfamiliar address, don't open it. If you are unsure about an email that appears to come from the club, you can check your records for recent invoices via our website, or email us directly to ask.

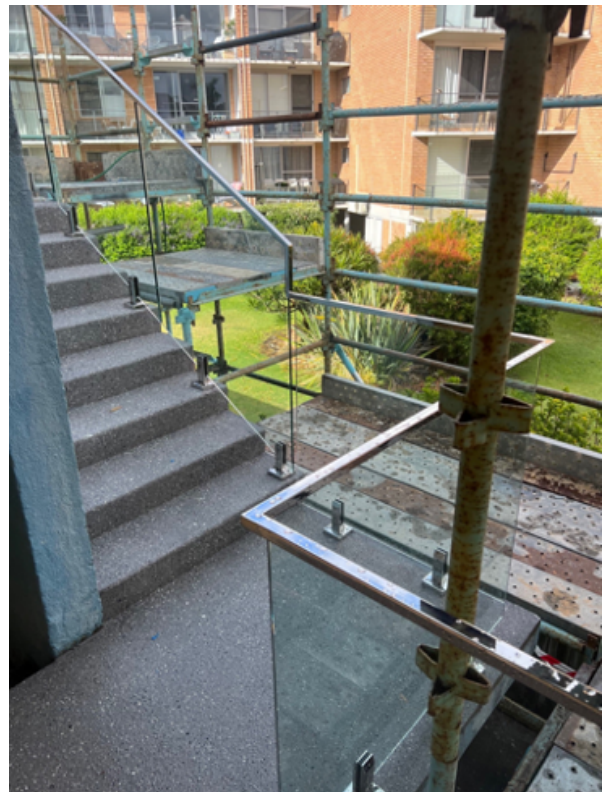
## Castaways at Shoal Bay

Castaways is now back in operation! The glass balustrades look great and are significantly lighter than the old brick ones. The glass enhances the water views and has modernised the look of the building. While the scaffolding was in position a number of other jobs were also completed. The photo captions tell the story. Thanks to Malcolm Mathie for managing this project. Most of the work was funded from the strata building levy balance. Thus the club's direct costs were, including a strata contribution, limited to \$20,000.



New balustrades. Blue timber above our unit entrance has dry rot and will be replaced in a later work stage.

New balustrades in glass and stainless steel. Photo also highlights new waterproofing and non-skid treatment on concrete walkways and stairs.



With summer coming, why not book a holiday here? Water views, close to the beach (and dolphins!). Special provisions apply for members, including a 20% discount for periods other than the Christmas and Easter holiday peaks. Members don't pay the booking fee or the security deposit!

<https://www.portstephensaccommodation.com/stay/castaways-unit-4-17-shoal-bay-road>

## Surplus Trunks for Sale

Surplus storage trunks are available for sale at the Lodge for \$30. Size is 820,450,240mm (L,D,H). Contact [storage@eloueraskiclub.asn.au](mailto:storage@eloueraskiclub.asn.au)



## CPSR 2024 Season dates

The 2024 CPSR Winter season dates are

- Opening Saturday 22 June
- Closing Sunday 22 September

## Stillwell Open for Summer

This summer CPSR aims to keep Stillwell Hotel open seven days a week. This is contingent on available staffing resources and bookings. Pygmy Possum guests are welcome to dine at Stillwell. Stillwell requests you book by 2:00 pm on the same day with a minimum of four people. However, bookings may not be taken if there are no residents in Stillwell. You can contact Stillwell on 02 7966 4671. This number will only answer when staff are on site, so try and call between 9am and 3pm.

## Final Note

*Have a short (150w or less) story about the Lodge you'd like to share? An iconic picture? We want you! Send us your submission to [pygmypossum@eloueraskiclub.asn.au](mailto:pygmypossum@eloueraskiclub.asn.au) and we will aim to get it into the next issue.*

<b>Club Calendar 2024</b>	
<a href="#">Priority Bookings</a> Open (for the 2024 Winter Season)	01/12/2023
Priority Bookings Close ( payments must be received)	13/02/2024
General Bookings Open (for the 2024 winter season)	20/03/2024
Pre Season Work Party	07/04/2024 - 14/04/2024
Members Annual Subscription and Building Levy Fees Due	31/03/2024
Storage Hire Fees Due	31/03/2024
Call for Nominations for Board Positions, Notice of AGM	May 2024
Annual General Meeting	July 2024
Post Season Work Party	Nov 2024